



Jonathan Green
QUALITY LAWN SINCE 1881

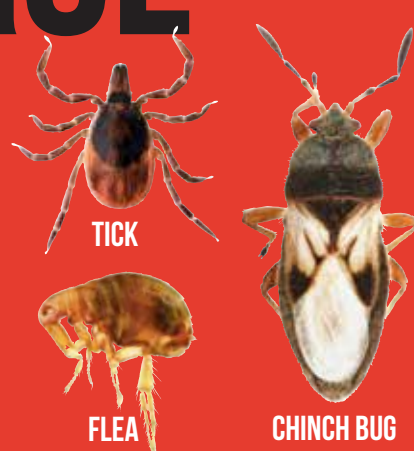


ORGANIC INSECT CONTROL

FOR LAWNS & GARDENS

Kills and repels over 100 insect pests

May be used for perimeter home treatments



Active Ingredients	
Rosemary Oil	2.0%
2-Phenethyl propionate	0.6%
Inert Ingredients*	97.4%
Total Ingredients	100.0%
*Corn Cob, Wintergreen Oil	

KEEP OUT OF REACH OF CHILDREN CAUTION

See back panel for additional precautionary statements and directions.

FIFRA 25(b) Exemption

This product has not been registered by the United States Environmental Protection Agency. Jonathan Green represents that this product qualifies for exemption from registration under the Federal Insecticide, Fungicide and Rodenticide Act.

THE NEW AMERICAN LAWN

Insect pests can be particularly troublesome if left unchecked. It kills bugs fast and repels crawling insects without synthetic toxins or residue. Research shows that plants produce oils that provide natural defenses against insects. Jonathan Green Organic Insect Control has a unique combination of fresh, natural scents from plant oils which kills bugs fast and also has strong repellency characteristics while having no adverse effect on mammals, birds or fish.

KILLS AND REPELS

Ants (including Carpenter, Red Harvester, Pavement, Odorous, Pyramid, Argentine), Armyworms, Billbugs, Bristletails, Centipedes, Chiggers, Chinch Bugs, Crickets, Cutworms, Fleas, Earwigs, Firebrats, Grasshoppers, Ground Beetles, Leekhoppers, Mealybugs, Millipedes, Pillbugs, Scorpions, Spiders, Springtails, Ticks, Wireworms and other insects.

FIFRA 25(B) EXEMPTION

Active Ingredients		
Rosemary Oil	2.0%	*Corn Cob,
2-Phenethyl propionate	0.6%	Wintergreen Oil
Inert Ingredients*	97.4%	
Total Ingredients	100.0%	

DIRECTIONS FOR USE

READ ENTIRE LABEL AND USE ACCORDINGLY.

WHERE TO USE:

Lawns, around Home Foundations (perimeter treatment), Landscapes (Ornamental and Flower Gardens).

HOW TO APPLY:

(Use higher application rates for severe infestations - re-apply as needed)

LAWNS:

Use a spreader to uniformly apply 2 to 5 lbs. over 1,000 square feet.

(1,000 sq. ft. = 20 ft. x 50 ft.) Re-apply every two to four weeks or as needed.

LANDSCAPES:

(Ornamentals and Flowers): Using a handheld spreader or spread by hand (wear a protective glove and wash hands with soap and water afterwards) apply 1 to 2 lbs. evenly over each 500 sq. ft. area (500 sq. ft. = 5 ft. x 100 ft.). Re-apply every four to six weeks or as needed.

HOME FOUNDATIONS:

Using a handheld spreader or spread by hand (wear a protective glove and wash hands with soap and water afterwards) evenly apply a 2 ft. wide band next to the home foundation. Use 1 to 2 lbs. for each 500 linear ft.

(500 linear ft. = 2 ft. x 250 ft.) Apply under/two to four all landscaping adjacent to home, especially mulch. Re-apply every two to four weeks or as needed.

NOTE:

THE GRANULES SHOULD NOT BE WATERED AFTER APPLICATION.

YOU MAY NEED TO RE-APPLY AFTER A HEAVY RAINFALL.

CHILDREN AND PETS CAN RE-ENTER THE TREATED AREA AFTER APPLICATION.

SPREADER SETTINGS

Spreader settings given are approximate and variation can occur between identical models. User should calibrate spreader by accurately weighing a few pounds into your spreader and applying to a measured area. Then adjust spreader setting if necessary to assure correct rate of application.

ROTARY SPREADERS

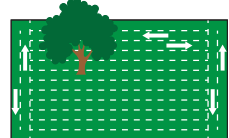
	2 lb. Rate	5.0 lb. Rate
Jonathan Green		
New American Lawn	4	10
New American Lawn Deluxe & Pro	4-1/2	10
New American Hand Spreader	3	5
Chapin	10	11
Cyclone	4 - 5	7
Earthway		
ACE - Greenthumb		
Agway - Fertilome	5	10
Lesco	16 - G	22 - J
Precision Greenline (Red Devil)	4-1/2	7
Scotts Rotary Spreaders	2-1/2 to 3	5
Scotts EasyGreen	20	25
Scotts Wizz	6	?
Spyker	4-5	8

DROP SPREADERS

	2 lb. Rate	5.0 lb. Rate
Central	6	9
EZ Republic	6	9
Earthway		
Ames	14	20
Precision Greenline		
Red Devil	2-1/2	5
Scotts		
Drop	5-1/2	10

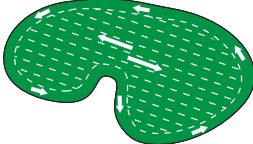
For rectangular lawns

Apply two header strips across each end for a turning area. Then apply back and forth in the longest direction.



For irregular-shaped lawns

Apply a header strip around the entire lawn for a turning area, then apply back and forth.



Note: For rotary spreaders, each pass should be within 10 feet of each other to ensure an overlap.

- Do not leave spreader open when making turns.
- For best results, do not apply on a windy day.
- Swath will vary due to weather conditions, product used and walking speed.
- To determine how much coverage you need, multiply the length of your lawn by its width. This equals your total square footage. Deduct any non-lawn areas (house, gardens, walkways, etc.).

NOTE

The primary active ingredient in Jonathan Green Organic Insect Control are approved as direct food additives or classified as GRAS (Generally Recognized As Safe) by the US Food & Drug Administration.

2-Phenethyl propionate is a derivative of peanut oil, but it does not contain the enzyme that triggers peanut allergies.

Jonathan Green represents that this product is a Minimum-Risk pest control product and qualifies for exemption from EPA registration under the Federal insecticide, Fungicide, and Rodenticide Act (FIFRA).

PRECAUTIONARY STATEMENTS

CAUTION: We recommend good safety practices when using any pesticide, such as avoiding contact with eyes and skin and keeping out of the reach of children and pets. If product gets in eyes, flush with water. If on skin, wash with soap and water. If irritation persists, contact a physician.

CAUTION

Do not apply near water, storm drains, or drainage ditches. Do not apply if heavy rain is expected. Apply this product only to your lawn or garden and sweep any product that lands on the driveway, sidewalk or street back onto your lawn or garden. Also, sweep fertilizer off concrete surfaces to avoid staining.

FOR CHEMICAL SPILL, LEAK, FIRE OR EXPOSURE CALL: CHEMTREC 1-800-424-9300.

FIRST AID

If in Eyes	Hold eye open and rinse slowly and gently with water for 15-20 minutes. Remove contact lenses, if present, after the first 5 minutes, then continue rinsing eye. Call a poison control center or doctor for treatment advice.
If on Skin	Rinse skin immediately with plenty of water for 15-20 minutes. Move person to fresh air.
If Inhaled	Call a poison control center or doctor for further treatment advice.
If Ingested	Do not induce vomiting unless told to do so by a poison control center or a doctor.

IMPORTANT: READ BEFORE USE:

Read the entire Directions for Use and the Warranty Disclaimer and Limitation of Liability before using this product. If terms are not acceptable, return the unopened product container at once. By using this product, user or Buyer accepts the following Warranty Disclaimer and Limitation of Liability:

LIMITATION OF LIABILITY

To the extent consistent with applicable law, Jonathan Green makes no warranties of merchantability or of fitness for a particular purpose, nor any other express or implied warranty except as stated above. Buyer assumes all responsibility for safety and use in accordance with label directions and precautionary statements.

STORAGE AND DISPOSAL

Store in a cool, dry area and avoid excessive heat. For bags after partial use, reseal opened bag. Discard empty bag in trash.



Sign up to receive timely lawn tips
www.jonathangreen.com



My Pledge Of Satisfaction

We have made every effort in the formulation of this product to insure that you will be satisfied with the results. If, for any reason, you are not satisfied, please write and describe the problem. Our lawn specialists will make every effort to assure your success.

Jonathan Green



Distributed & Guaranteed by Jonathan Green, Inc.
48 Squankum-Yellowbrook Rd., POB 326, Farmingdale, NJ 07727
732-938-7007